

# The Seating Collection

imperial  
*Office furniture*



# Contents

## operator, conference & bistro

everyday	- page 4	pluto	- page 10	zeta	- page 16	dream+	- page 22
omega	- page 5	fly	- page 11	stream	- page 17	seance art	- page 23
harmony pure	- page 6	laser	- page 12	lyra	- page 18	time	- page 24
harmony	- page 7	element strip	- page 13	tango	- page 19	twist	- page 25
opus	- page 8	web	- page 14	lyra click	- page 20		
active	- page 9	lyra net	- page 15	theo @	- page 21		

## sofas & soft seating

relax	- page 27	polo+	- page 28	galaxy	- page 31	moon	- page 33
relax+	- page 27	mango	- page 29	sky classic	- page 32	kubik	- page 34
polo	- page 28	next	- page 30	sky	- page 32	delta	- page 35

finish & fabric - pages 36-47

operator,  
conference & bistro



765.



755.



295-SYS.



290-SYS.



297.



293-RA, F40-N6.



292-BR-KZ.



292 F10.



850 •



852-H •



852-RA •



855-RA •



855-KZ-N4 •



855-K-N4 •



820 •



822 •



830 •



832-H •



835-KZ •



825-KZ •



397.



397.



397.



387.



387.



316.



315.



315.

Pluto.



606.



601.



621.



626.



636.



631.

Fly.



714.



715.



716.



700.



700.



713.



697-SYS.



695-SYS.



695-SYS.



683-KZ.



435-SYS.



435-SYS.



430-SYS.



440-KZ.





425-SYS.



420-SYS.



410-SYS.



405-SYS.



410-KZ-N4.



405-KZ.



201-SYS.



200-SY.



203-F80-N6.



203-F30-N6.



203-K2-N4.



213-3.





365-SYS.



363-SYS.



363-SYS.



363-SYS.



360-KZ.



360-KZ.



285-SYS.



280-SYS.



280-SYS.



282-KZ-N4.



237-SYS.



235-SY.



155.



370-SYS.



370-SYS.



370-SYS.



208-SY.



207-SY.



260-SYS.



260-SY.



260-SYS.



261-KZ.



263-K-B.



261-KZ.



100-BL.



143/T3.



131-B.



101-W/B.



101-WH.



190-K-B.



190-K-B.



190-K.



190-K.



199/4.



191-K-B.



160-N4.



175.



171.



176.



161.



170.



241.



243.



246.



244.



240.

# sofas & soft seating

Relax.



RELAX V.



RELAX T.



RELAX S.

Relax+.



RELAX + V.



RELAX + S.



RELAX + V-A.



Polo.



F30-N6.



F01-N4.



K-N4.

Polo+.



K-N4.



K-N4.



K-N4.

Mango.



F01-N4.



F30-N6.



F01-N4.





NEXT/2K-N4.



NEXT/K-N4.



NEXT F01-N4.



NEXT F30-N6.



K-N4.



F01-N4.



F30-N6.

Sky Classic.



Sky Classic V.



Sky Classic K-N4.



Sky Classic S-P.

Sky.



SKY V.



SKY S.



Moon.



MOON/B-K-N4.



MOON-N4.



MOON-KN4.



KUBIK/2.



TR30.



TR45.



KUBIK.



DELTA/4B-N4.



DELTA/2B-N4.



DELTA/B-K-N4.



DELTA/5-N4.

Patterns of wooden and steel components finishes

Colour shades of the stained beech



V1 Natural beech

Colour shades and structure of laminates



LZD Dark zebrano



LZL Light zebrano



LCH Beech chocolate



LDS Light oak

Powder coatings



N1 Black



N2 Effect Aluminium

Chrome



N4 Chrome gloss

## DINO

Composition: 100% Polyester  
 Weight: 350 g/lm  
 Width: 140 cm  
 Abrasion resistance:  
 Martindale 100 000 cycles  
 Flammability:  
 (GB) CRIB 5 EN 1021/1-2

category **E**



## FLORIDA

Composition: 100% Polyester  
 Weight: 570 g/lm  
 Width: 140 cm  
 Abrasion resistance:  
 Martindale 85 000 cycles  
 Flammability:  
 B1 (DIN 4102), M1 (NF P 92501-7), EN 1021/1-2  
 CRIB 5 (BS 5852 part II)

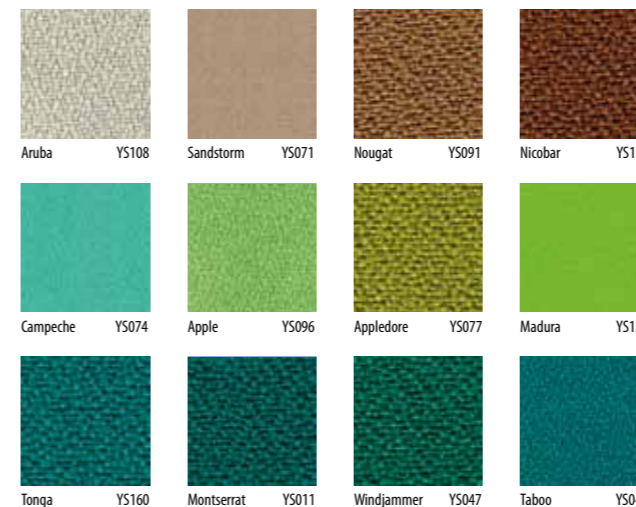
category **E**



## XTREME

Composition: 100% Polyester Xtreme FR  
 Weight: 434 g/lm  
 Width: 140 cm  
 Abrasion resistance:  
 Martindale 100 000 cycles  
 Flammability:  
 (GB) CRIB 5, (D)B1 EN 1021/1-2

category **F**



## XTREME PLUS

Composition: 100% Polyester Xtreme FR  
 Weight: 434 g/lm  
 Width: 140 cm  
 Abrasion resistance:  
 Martindale 100 000 cycles  
 Flammability:  
 (GB) CRIB 5, (D)B1 EN 1021/1-2

category **F**



### XTREME PLUS

Composition: 100% Polyester Xtreme FR  
 Weight: 434 g/lm  
 Width: 140 cm  
 Abrasion resistance:  
 Martindale 100 000 cycles  
 Flammability:  
 (GB) CRIB 5, (D)B1 EN 1021/1-2

category **F**



### XTREME PLUS

Composition: 100% Polyester Xtreme FR  
 Weight: 434 g/lm  
 Width: 140 cm  
 Abrasion resistance:  
 Martindale 100 000 cycles  
 Flammability:  
 (GB) CRIB 5, (D)B1 EN 1021/1-2

category **F**

### URBAN plus

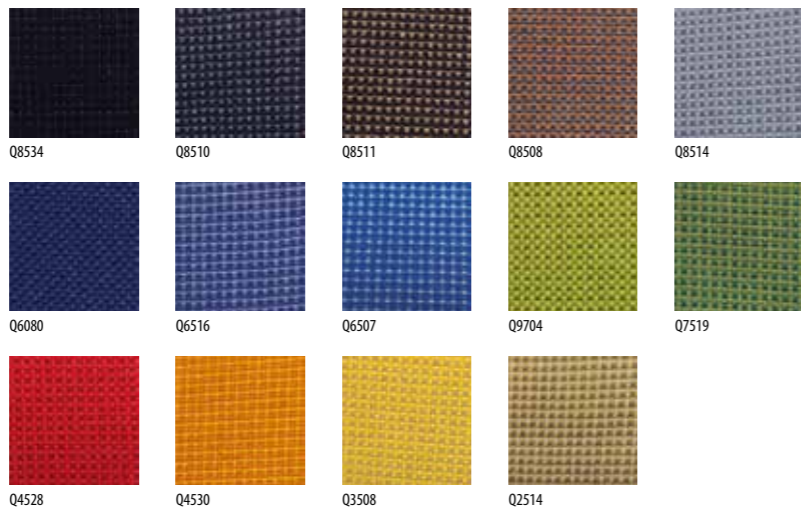
Composition: 100% Polyester Xtreme FR  
 Weight: 448 g/lm  
 Width: 140 cm  
 Abrasion resistance:  
 Martindale 90 000 cycles  
 Flammability:  
 (GB) CRIB 5, (D) B1, (F) M1 EN 1021/1-2

category **F**

## QUEEN

Composition: 100% Polyester FR Trevia CS  
 Weight: 365 g/lm  
 Width: 140 cm  
 Abrasion resistance:  
 Martindale 60 000 cycles  
 Flammability:  
 (GB) CRIB 5, (D) B1, (F) M1, (I) C1 EN 1021/1-2

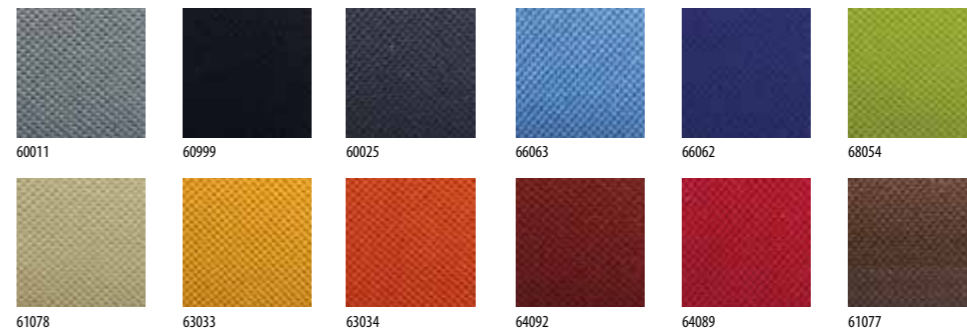
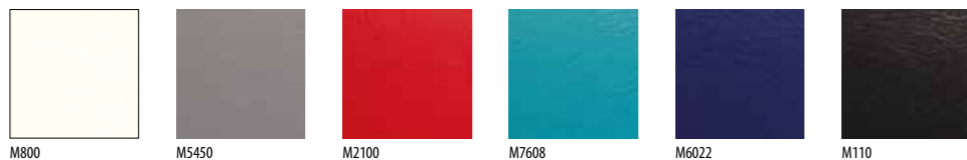
category **F**



## MECAMED

Composition: 89% PVC, 11% Polyester  
 Weight: 640 g/m<sup>2</sup>  
 Width: 140 cm  
 Abrasion resistance:  
 Martindale 50 000 cycles EN ISO 12947 - 2:2000  
 Flammability:  
 EN ISO 1021-1, EN ISO 1021-2  
 Features  
 Antibacterial protection  
 Resistance to alcohol

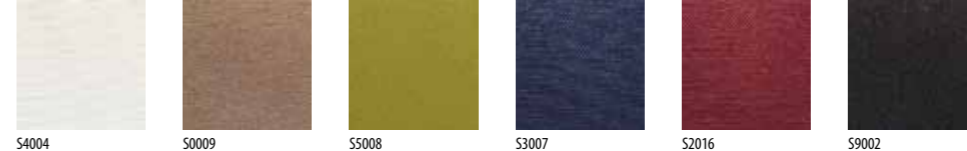
category **F**



## STYLE

Composition: 100% Polyester  
 Weight: 530 g/lm  
 Width: 150 cm  
 Abrasion resistance:  
 Martindale 80000 cycles BS EN ISO 12945-2  
 Flammability:  
 B 3825 EN 1021 1&2

category **F**



## SILVERTEX

Composition: PVC  
 Weight: 685 g/m<sup>2</sup>  
 Width: 140 cm  
 Abrasion resistance:  
 Martindale 100 000 cycles EN ISO 12947:1999  
 Flammability:  
 EN ISO 1021-1, EN ISO 1021-2  
 Features  
 Antibacterial protection  
 Resistance to blood, urine and oil

category **M**



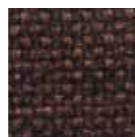
## JET

Composition: 100% Polyester  
 Weight: 735 g/lm  
 Width: 140 cm  
 Abrasion resistance:  
 Martindale 100 000 cycles  
 Flammability:  
 C1, B1, M1, CRIB 5, EN 1021/1-2

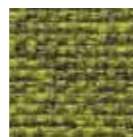
category **M**



L1014M



L2007M



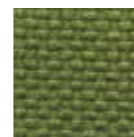
L7021M



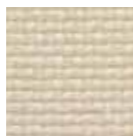
L4021



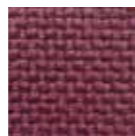
L2036



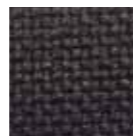
L7021



L1049



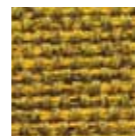
L5003



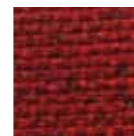
L8017



L8033



L9421M



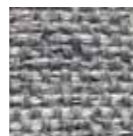
L9302M



L7025



L8027



L9804

## AQUARIUS

Composition: Pure New Wolle / 100% vlna  
 Weight: 370 g/m<sup>2</sup>  
 Width: 140 cm  
 Abrasion resistance:  
 Martindale 50 000 cycles EN ISO 12947-2  
 Flammability/  
 EN 1021/1-2, BS 7176 Low Hazard

category **M**



JA001



JA002



JA159



JA194



JA419



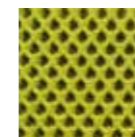
JA442



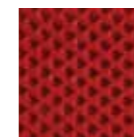
U60999



U60011



U68056



U64089



U63034



U66063



U65078

## NETS

### Goyal

Composition: 64% PL - 36% PA  
 Weight: 420 g/lm  
 Width/sirka: 140 cm  
 Abrasion resistance:  
 Martindale 100 000 cycles

Goyal mesh is designed for certain WEB, ZETA,  
 LEXTRA models.

### String

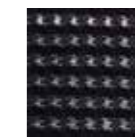
Composition: 97% Polyester / 2% Polyamid / 1% Lycra  
 Weight: 370 g/lm  
 Width: 120 cm  
 Abrasion resistance:  
 Martindale 30 000 cycles EN ISO 12947-2  
 Flammability/  
 BS EN 1021/1:1994, BS EN 1021/2:1994

String mesh is designed for certain ZETA, SEANCE and DREAM models.

## THEO @ NETS

Composition: 100% Polyester  
 Weight: 480 g/lm  
 Width: 160 cm  
 Abrasion resistance:  
 Martindale 70 000 cycles  
 UNI EN ISO 12947-2  
 Flammability:  
 EN 1021-1, EN 1021-2

category **M**



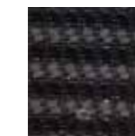
Goyal GB01 black



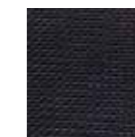
Goyal GB1501



Goyal GB4501



Goyal GB8501



String Black



String Grey

Fabrics pattern book

**OMEGA**

Composition: 100% Polyester  
 Weight: 500 g/lm  
 Width: 160 cm  
 Abrasion resistance:  
 Martindale 100 000 cycles BS EN ISO 12947-2  
 Light fastness:  
 5-6 BS EN ISO 105-B02  
 Fastness of rubbing:  
 4-5 EN ISO 105x12  
 Pilling:  
 5 BS EN ISO 12945-2  
 Flammability:  
 BS 5852-0, EN 1021-1

category **M**



60999



60120



61147



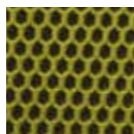
60121



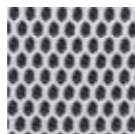
65070



66113



68093

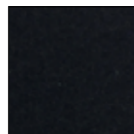


60122

**BLAZER**

Composition: Pure New Wolle / 100% vlna  
 Weight: 430 g/m<sup>2</sup>  
 Width: 140 cm  
 Abrasion resistance:  
 Martindale 50 000 cycles EN ISO 12947-2  
 Flammability:  
 EN 1021/1-2, BS 7176 Low Hazard

category **O**



CUZ08



CUZ09



CUZ23



CUZ29



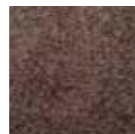
CUZ30



CUZ63



CUZ28



CUZ31



CUZ40



CUZ39



CUZ46

**COMFORT+**

Composition:  
 88% Polyester, 12% Polyurethane  
 Weight: 385 g/lm  
 Width: 140 cm  
 Abrasion resistance:  
 Martindale 150 000 cycles, ISO 12947-2  
 Flammability:  
 B 3825 B1, BS 5852 source 0, EN 1021 1&2

category **COM+**



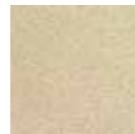
C0050



C0010



C60003



C61002



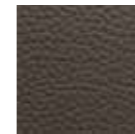
C66005



P5200



P5250



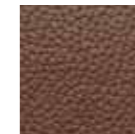
P5310



P5320



P5110



P5400



P5000



P1025



P100



V5000



V1025



V100



A640895



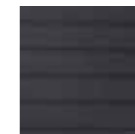
A68054S



A66063S



A60011S



A60999S

**LEATHER**

Composition:  
 100% Leather  
 Weight: 950 g/m<sup>2</sup>

category **P**

**VENA**

Composition:  
 100% Leather  
 Weight: 950 g/m<sup>2</sup>

category **P/V&F**

**Style Strip**

Composition: 100% Polyester  
 Weight: 530 g/lm  
 Width: 150 cm  
 Abrasion resistance:  
 Martindale 80000 cycles BS EN ISO 12945-2  
 Flammability:  
 B 3825 EN 1021 1&2



**Imperial Office Furniture Limited**  
Bankfield Business Park,  
Quebec Street, Bolton BL3 5JN

**Telephone: 01204 364602**  
**Fax: 01204 381509**  
[www.imperialfurniture.co.uk](http://www.imperialfurniture.co.uk)  
[info@imperialfurniture.co.uk](mailto:info@imperialfurniture.co.uk)



British Contract Furnishing Association



URS is a member of Registrar of Standards (Holdings) Ltd.

Bolton Business **Environment** Network